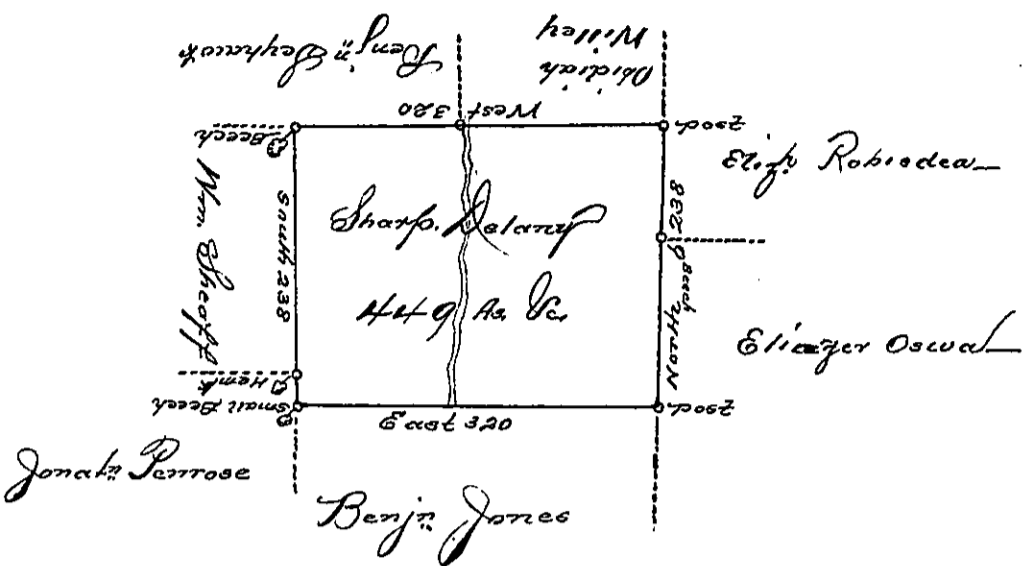


D-1-17



28-136

A Draft of a tract of land called Situate on the waters of (Lobe) Creek
 joining land surveyed for Obidiah Wiley & others in Luzerne Co (181) Containing
 four hundred & forty nine acres & Allowance of six (6) Roads. &c. Surveyed for
 Sharp Delaney the 20th day of October (obliterated) in pursuance of a warrant dated
 the 15th day of April 1788.

by Wm Gray D. J.

To Daniel Brodhead Esq.
 Surveyor Genl.

IN TESTIMONY that the above is a copy of the original remaining on file in the
 Department of Internal Affairs of Pennsylvania, made con-
 formably to an Act of Assembly approved the 16th day of
 February, 1833, I have hereunto set my Hand and caused
 the Seal of said Department to be affixed at Harrisburg, this
 _____ day of August, 1895.

James W. Patton
 Secretary of Internal Affairs.